

2015 Senior LinkAge Line®

Minnesota's Link to a Local Expert

Senior LinkAge Line® contacts

277,324 = 2015
263,262 = 2014

5% Increase

Average age **75**

585 calls/day on average

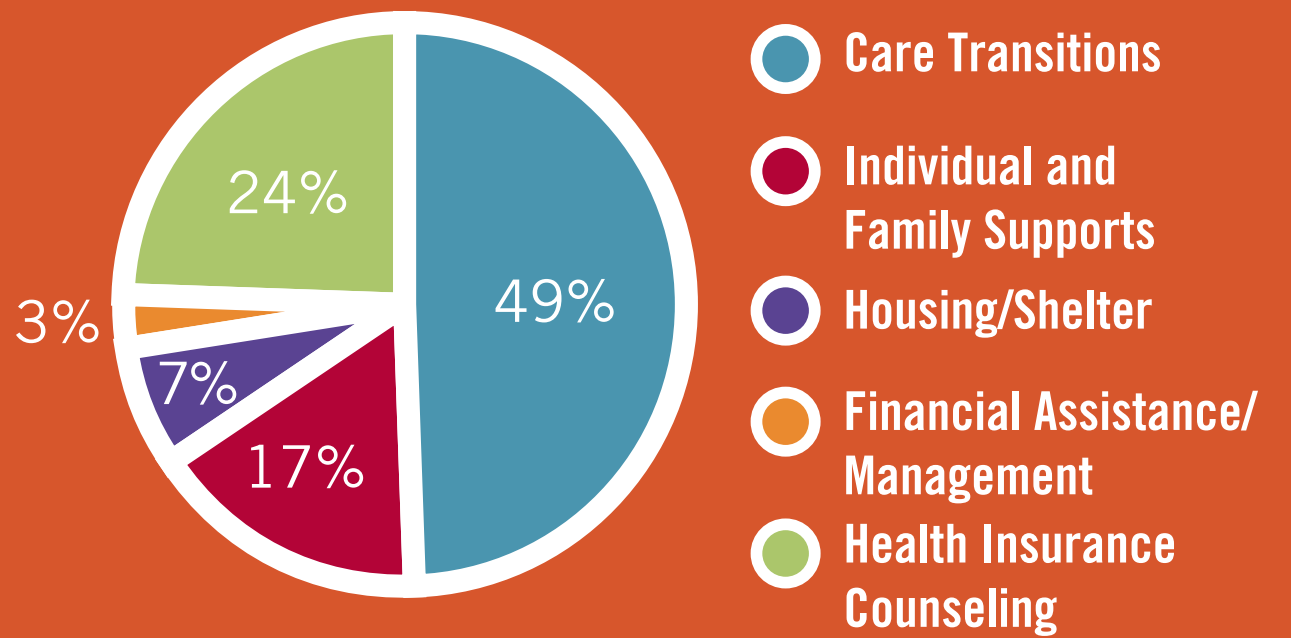
1,722 caregiver sessions
(family member or friend looking for information on behalf of consumer)

76,304 follow-up calls

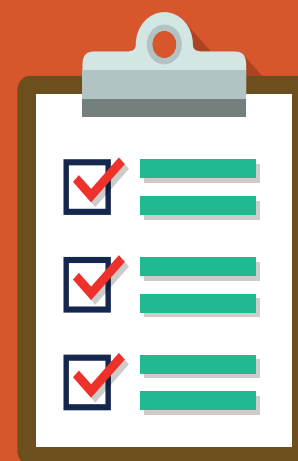


Look who's calling

Top reasons consumers contacted the Senior LinkAge Line®



94% Would recommend to a friend or family



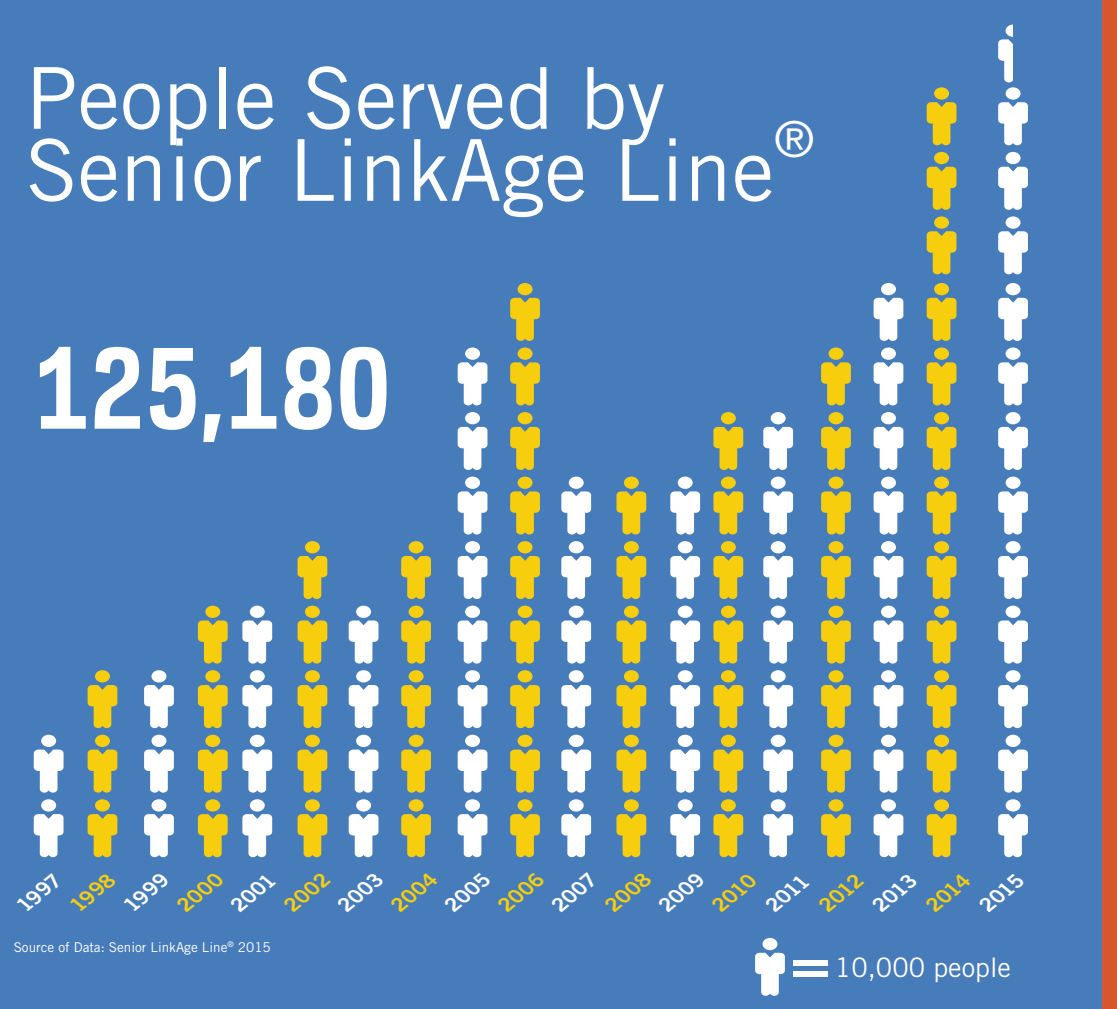
Number of Pre-Admission Screenings

63,874 2015

61,297 2014

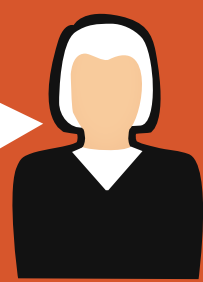
People Served by Senior LinkAge Line®

125,180



What people are saying

"I had lots of questions and they answered them all."



"This service is definitely something seniors need to know about."



"Well presented and organized. Exceeded my expectations!"



Outreach Events



20,696 PEOPLE
attended Senior LinkAge Line® events

Source of Data: Senior LinkAge Line® 2015

Senior LinkAge Line®
1-800-333-2433

MINNESOTA'S LINK TO A LOCAL EXPERT

